



# Kudamatsu City



“The city of the falling star” where urban  
functions in harmony with nature create  
the most comfortable place to live





[Kudamatsu City, a comfortable city to live]

# Data demonstrating high-quality living in Kudamatsu

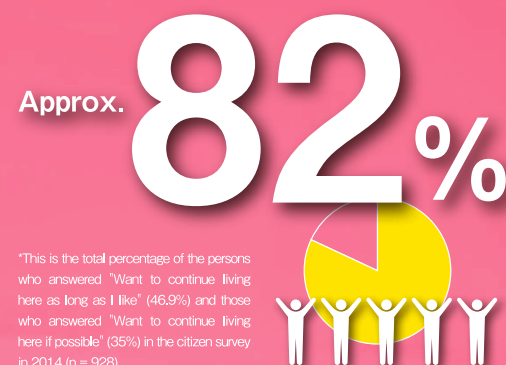
## Kudamatsu, One of the Most Livable Cities in Japan

In the Livable City Rankings published by a private organization, Kudamatsu City is evaluated highly as it ranks 22nd among 812 municipalities in Japan. Moreover, the 2014 Citizen Perception Survey showed that most citizens wanted to continue living in Kudamatsu City.

Overall evaluation	Security	Convenience	Comfort	Wealth
22nd	369th	106th	6th	204th

Source: "City Data Packs 2019," Toyo Keizai, Inc.

People who want to continue to live in Kudamatsu

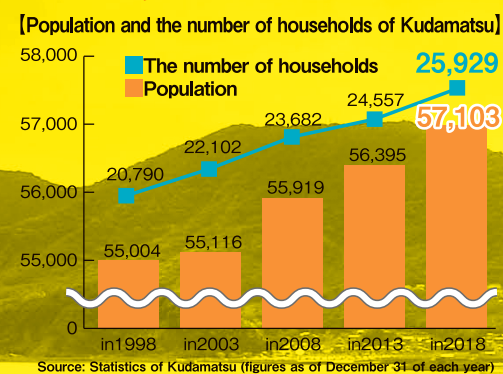


## A City of Monozukuri

Kudamatsu City has developed as an industrial city and has been delivering high technical strengths as a city of "Monozukuri", which means "making things". The city is home to a wide variety of manufacturing industries, including railroads, ships, and high-tech equipment.



A population increase of over **2,000** in 20 years



## A Comfortable City to Live

Kudamatsu City is a convenient place to live and work in because it provides the sufficient number of commercial facilities and high convenience. Moreover, blessed with a mild climate and a rich natural environment, Kudamatsu has a high-quality, calm, natural port that acts not only as an industrial harbor but also as a place where citizens and tourists can mingle with one another as large cruise passenger boats call at the port.



## A Safe City to Live

Kudamatsu City provides subsidies for expenses, such as child medical care and day care. The city provides a safe, pleasant environment for raising children, such as parenting support facilities. There are also facilities to ensure the healthy living of the citizens, such as hospitals and welfare facilities.



## A City with Affordable Water

Home to two dams, Kudamatsu City supplies the most affordable water in Yamaguchi prefecture and the fifth most affordable water in Japan.\* This water in plastic bottles is widely known as Hoshi-no-Izumi (star spring).



\*Source: Comparison of water charges in 815 cities and special wards (per 24 m3 per month)

Source: "City Data Packs 2019," Toyo Keizai, Inc.

National average

3,791 yen

Kudamatsu city

**1,800 yen**

Financial Capability Index (three-year average)

**0.892**

## A City with Independent, Sound Financial Strength

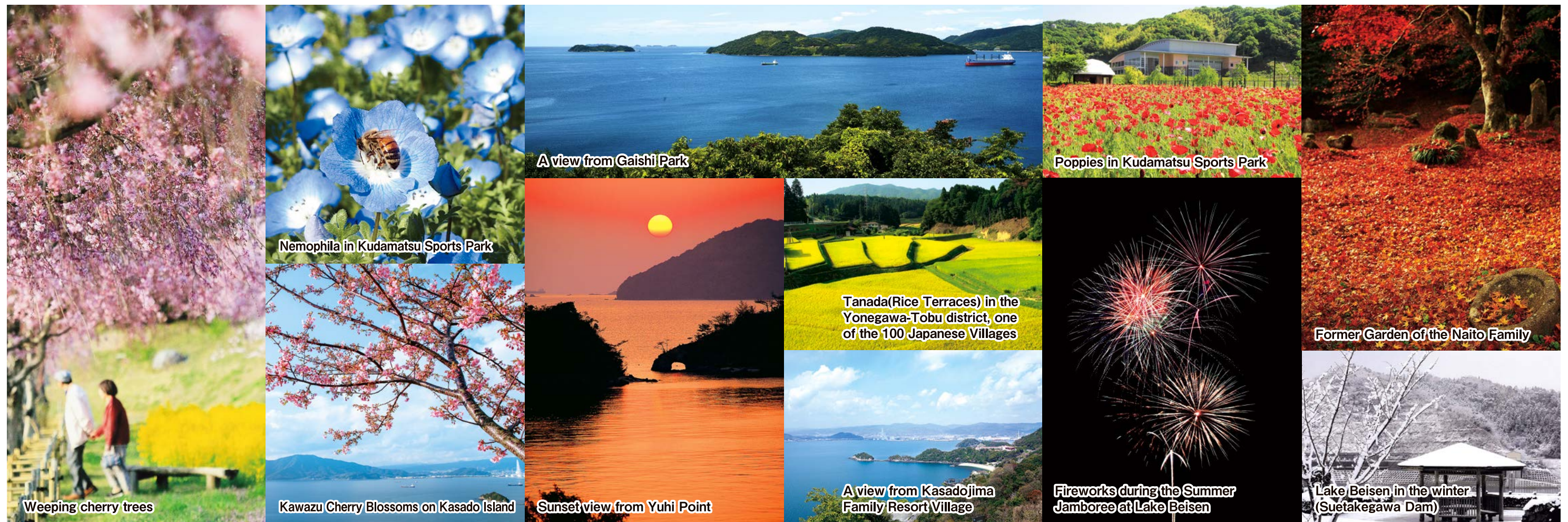
During the great merger in the Heisei era, Kudamatsu chose not to merge, but chose and has promoted independent administrative and financial operations. The city's financial capability index, which indicates municipal financial capability, ranked top in Yamaguchi Prefecture.\*

Financial Capability Index (three-year average)	Ratio for determining soundness (unit: %)			
	Real deficit ratio	Consolidated real deficit ratio	Real debt service ratio (three-year average)	Future burden ratio
0.892			1.2	13.7

Source: Financial Indexes of Municipalities released by Yamaguchi Prefecture (March 2019)







## [Highlights of Kudamatsu]

# Comfortable Living in Kudamatsu

## A City where Nature, Urban Functions, History, and Culture Exist in Harmony

Kudamatsu City features seasonal nature that only Japan can offer, such as cherry blossoms, terraced paddy fields, sunset, and colors of autumn leaves, and that not only provides healing and peace of mind but also produces a variety of local specialties and food. The prosperity that the city enjoyed as a post station during the Edo era still remains in the forms of a variety of traditional events and performing art, such as the Inaho Matsuri(Festival).



## A City that Enriches People both Mentally and Physically

Kudamatsu Sports Park offers a general ground for track and field and softball, a heated indoor pool, and a gymnasium. This is a place where anyone can enjoy a wide-range activities of sports, from walking to full-fledged sports.



## A Comfortable, Livable City

Kudamatsu City has a wide-range of facilities, such as shopping malls, cultural halls, a movie theater, library, and Onsen (hot springs). With a wealth of sites where families can enjoy together, including daily shopping, Kudamatsu City is a comfortable and convenient place to live.







### Kasado Bridge

A Langer truss bridge completed in 1970. Since its completion, the bridge has contributed greatly to the development of the island. The evening view from the bridge is just stunning.

### Kokumin-shukusha (Hotel) Oojou

The hotel opened in 2016. Its features include all guestrooms with an ocean view that leverages nature on Kasado Island; Shiosai-no-yu, an open-air bath that provides a view of the Seto Inland Sea; and local dishes, including Kasado Hirame (flounder).

# Kudamatsu Collection

## [Sightseeing Spots and Specialties of Kudamatsu City]

### Local specialties of Kudamatsu

Local specialties of Kudamatsu City include Kasado Hirame (flounder), sake made by a brewery with over 100 years of history, rare gyukotsu (beef bone) ramen, and Kurumaki garlic. Local specialties that are produced by the unique land quality and climate of Kudamatsu add smiles and energy to people and enjoyment and vigor to the city.



From Kudamatsu to the World

### Nature-based Hams and Sausages



#### Asahiya Ltd.

Ham and sausage manufacturing companies proudly represented Kudamatsu City. Both companies have won many awards in Germany, the home of authentic hams and sausages.



#### Gourmet Road Yasuda

# MONO [Monozukuri representing Kudamatsu]



# ZUKURI MONO

Kudamatsu City has always been an active monozukuri city. The city's art of monozukuri is of world-class quality. Let's explore the spirit of the companies that support Kudamatsu.



### Hitachi, Ltd.

Cutting-edge technology of manufacturing train cars

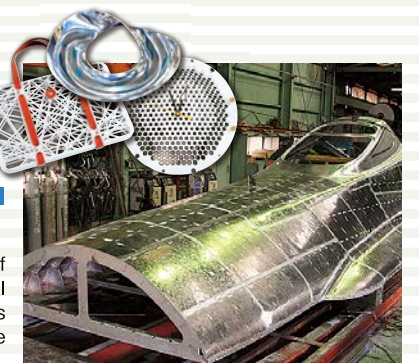
The Kasado Works of Hitachi, Ltd., develops and manufactures train cars for domestic and international markets, such as Shinkansen and monorails. The company is a fully-integrated, leading provider of rail solutions, such as A-train, light aluminum car bodies, and train management system using latest IT technology.



### Yamashita Kogyosho Co., Ltd.

"UCHIDASHI" 3-Dimensional Sheet Metal Forming Specialists

Yamashita Kogyosho is recognised as the pioneer of Shinkansen face production by "Uchidashi", and is a Special Prize recipient of the Monozukuri Nippon Grand Award. This hand-hammering craftsmanship has contributed greatly to the production of an elegant streamline "face" of the Shinkansen.



### Shin Kasado Dockyard Co., Ltd.

A global company centering on shipbuilding

Shin Kasado Dockyard Co., Ltd., builds and repairs ships and manufactures industrial machineries. As a member of the Imabari Shipbuilding Group, which ranks at the top in Japan in terms of shipbuilding tonnage, the company constructs advanced, high-quality, economical bulkers. These ships work actively on the seas of the world.



### Toyo Kohan Co., Ltd.

Monozukuri for our daily lives

Toyo Kohan Co., Ltd., is a private company that manufactured the first tin plate in Japan. In recent years, the company also manufactures functional materials, which are made by precision machining aluminum and resin, for electronic and electrical products, and medical products, such as surface-treated silicon substrates.





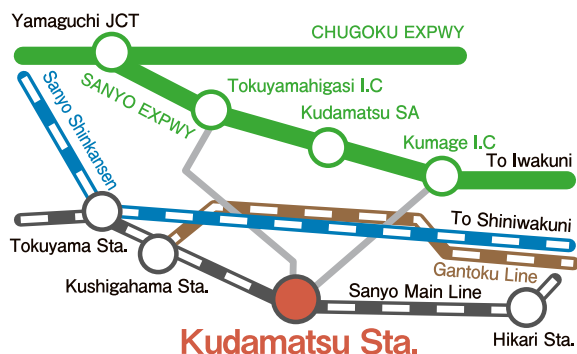
# Access・Information

## »Access by train

- Take Sanyo Shinkansen to Tokuyama Station and transfer to the local Sanyo Line. Get off at JR Kudamatsu Station.

## »Access by car

- Approx. 10 minutes from Tokuyama Higashi Exit on Sanyo Expressway
- Approx. 25 minutes from Kumage Exit on Sanyo Expressway
- Approx. 45 minutes from the port of Yanai
- Approx. 15 minutes by taxi from Tokuyama Station
- Approx. 25 minutes by bus from Tokuyama Station
- For people coming from the vicinity of Fukuoka, enter Sanyo Expressway at Yamaguchi Junction on Chugoku Expressway

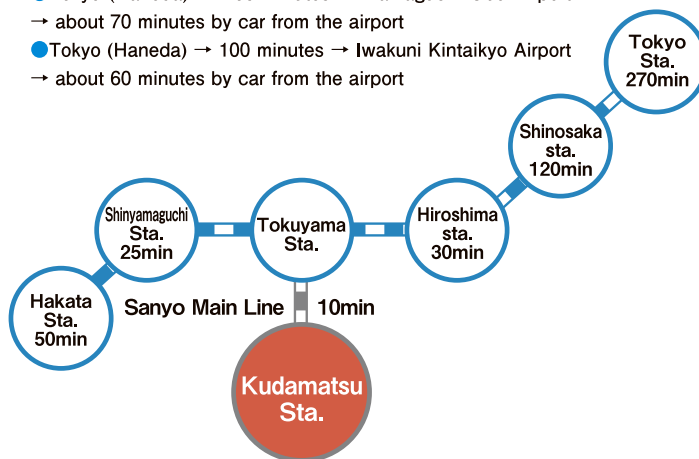


## »Access by ferry

- For people from Shikoku, Boyo Ferry provides services from Matsuyama (Ehime) to the port of Yanai, 150 minutes ferry ride.
- For people from the vicinity of Oita, Suonada Ferry offers services from the port of Taketatsu (Oita) to the port of Tokuyama, 120 minutes ferry ride.

## »Access by air

- Tokyo (Haneda) → 100 minutes → Yamaguchi Ube Airport → about 70 minutes by car from the airport
- Tokyo (Haneda) → 100 minutes → Iwakuni Kintaiyko Airport → about 60 minutes by car from the airport



Kudamatsu City  
Directory commemorating the 80th Anniversary of  
the incorporation of Kudamatsu as a city

**Published by Kudamatsu City**

Date of publication: November 2019

3-3-3, Otemachi, Kudamatsu, Yamaguchi 744-8585

Phone: +81-833-45-1700

Edited and printed by Japan International Institute, Inc.

"The city of the falling star" where urban functions  
in harmony with nature create the most comfortable  
place to live

To Kudamatsu

Kudamatsu

Search

<http://www.city.kudamatsu.lg.jp/>

